

ANGKOR-LES-RUINES CAMBODGE

The post office's original name was Angkor Les Ruines. Its earliest postmark was in type F1 format. This example from 1921 is the first known copy of this postmark.



POSTMARK TYPE: F1
PERIOD OF USE: 1921



POSTAL MARKINGS
ANGKOR LES RUINES CAMBODGE 6 DEC 21 (blue)

ANGKOR-LES-RUINES CAMBODGE

The Angkor-Les-Ruines post office shortened its name to Angkor on 24 August 1930. The last postmark with the original name was in the type G1 format.



POSTMARK TYPE: G1
PERIOD OF USE: 1926-31



POSTAL MARKINGS
ANGKOR-LES-RUINES CAMBODGE 20-2 29

ANGKOR CAMBODGE

"Angkor-Les-Ruines" changed its name to simply "Angkor" on 24 August 1930. The only postmark that employed the new designation was a type G1 device.



"VISIT ANGKOR ... Its Wonderful
Monuments"

POSTMARK TYPE: G1
PERIOD OF USE: 1931-35



POSTAL MARKINGS

ANGKOR CAMBODGE 8-2 32
slogan handstamp
Return to Sender handstamp

REVERSE

CITY HALL ANNEX NY APR 12
PNOMPENH CAMBODGE 22-6 32
CANTHO COCHINCHINE 24-6 32

BACPREA
CAMBODGE

Originally called Pak-Prea, the town's name changed to Bacprea on 11 July 1929. This envelope bears the only known example of a type G1 postmark from this small Cambodian town.



POSTMARK TYPE: G1
PERIOD OF USE: 1932



POSTAL MARKINGS
BACPREA CAMBODGE 29-10 32
REVERSE
SAIGON-CENTRAL COCHICHINE 31-10 32

BANAM CAMBODGE

The Banam post office opened in 1883. The earliest recorded postmark for Banam is the type E2 device. Banam's type E2 postmark remained in service for three decades.



POSTMARK TYPE: E2
PERIOD OF USE: 1893-1925



POSTAL MARKINGS
BANAM CAMBODGE 11 DEC 03
REVERSE
SAIGON-CENTRAL COCHINCHINE 13 DEC 03

BANAN CAMBODGE

This cover represents the latest known use of Banam's type E2 postmark, which had been in service for over three decades.



POSTMARK TYPE: E2
PERIOD OF USE: 1893-1925



POSTAL MARKINGS
BANAN CAMBODGE 13 JUIL 25
framed R with manuscript registration number
REVERSE
ELBEUF SEINE INFERIEURE 10-8 25

BANAM
CAMBODGE

Appearing first in 1928, the type G postmark replaced the type E2 postmark. It remained in service for a decade and a half, disappearing during World War II.



POSTMARK TYPE: G
PERIOD OF USE: 1928-43



POSTAL MARKINGS

BANAM CAMBODGE 9-2 33

airmail label

Saigon-Marseille routing instruction handstamp

REVERSE

SAIGON-CENTRAL COCHINCHINE 10-2 33

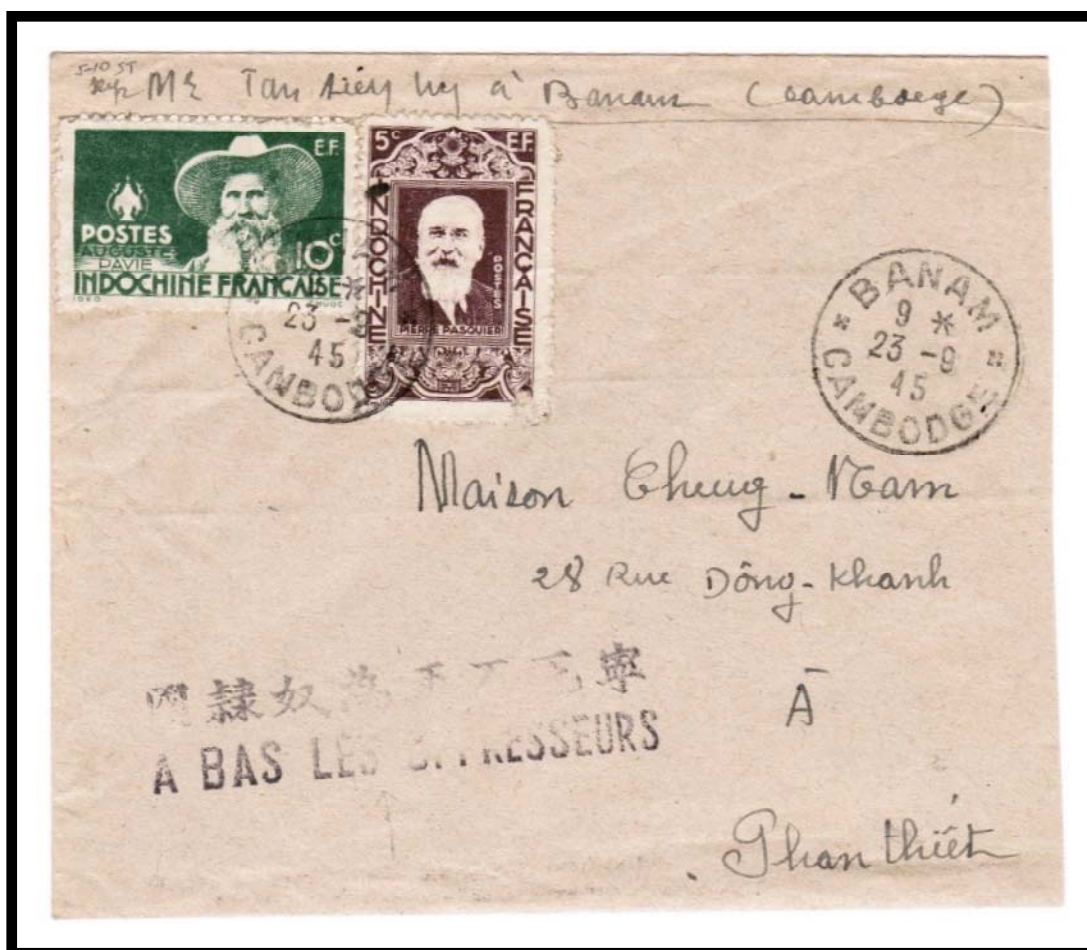
MARSEILLE-GARE-AVION B^{CHES} DU RHONE 23 • II 1933

BANAM CAMBODGE

Banam's last postmark was a type G1 device. The straight-line handstamp on this cover means "Down with the Oppressors!" The postmark first appeared in 1945.



POSTMARK TYPE: G1
PERIOD OF USE: 1945-50



POSTAL MARKINGS
BANAM CAMBODGE 23-9 45
propaganda handstamp

BATTAMBANG CAMBODGE

Battambang and its surrounding territory was acquired from Thailand in 1907. Its first Indochinese postmark was a type E2 device.



POSTMARK TYPE: E2
PERIOD OF USE: 1907-14



POSTAL MARKINGS
BATTAMBANG CAMBODGE 5 OCT 09
REVERSE
SAIGON-CENTRAL COCHINCHINE 8 OCT 09
NIMES-GARE GARD 10-11 09

BATTAMBANG CAMBODGE

In the E2(ch) variation, the month was specified with a numeral. Battambang's type E2(ch) postmark first appeared in 1913 and was removed from service a short time later in 1915.



POSTMARK TYPE: E2(ch)
PERIOD OF USE: 1913-15



POSTAL MARKINGS
BATTAMBANG CAMBODGE 30-9 13
REVERSE
PARIS 7 DISTRIBUTION 5-11 13

BATTAMBANG
CAMBODGE

Although both type F1 and E2 postmarks are known, this is the first recorded example of a type E1 postmark from Battambang, Cambodia.



POSTMARK TYPE: E1
PERIOD OF USE: 1925



POSTAL MARKINGS
BATTAMBANG CAMBODGE 31 OCT 25
REVERSE
PHNOMPENH CAMBODGE 25

BATTAMBANG CAMBODGE

Battambang's type F1(ch) postmark had a curious history. First appearing in 1923, it went out of service in 1927. It was to reappear a quarter of century later after World War II.



POSTMARK TYPE: F1(ch)
PERIOD OF USE: 1923-27, 1948-49



POSTAL MARKINGS
BATTAMBANG CAMBODGE 18-8 27
SAINT ETINNE LOIRE 2-(?) 27
REVERSE
SAIGON-PRINCIPAL COCHINCHINE 21-2 46

BATTAMBANG CAMBODGE

Type F1 postmarks are characterized by a double circle and ornaments separating the town identifier information. Battambang resurrected its type F1(ch) postmark in 1948-49.



POSTMARK TYPE: F1(ch)
PERIOD OF USE: 1923-27, 1948-49

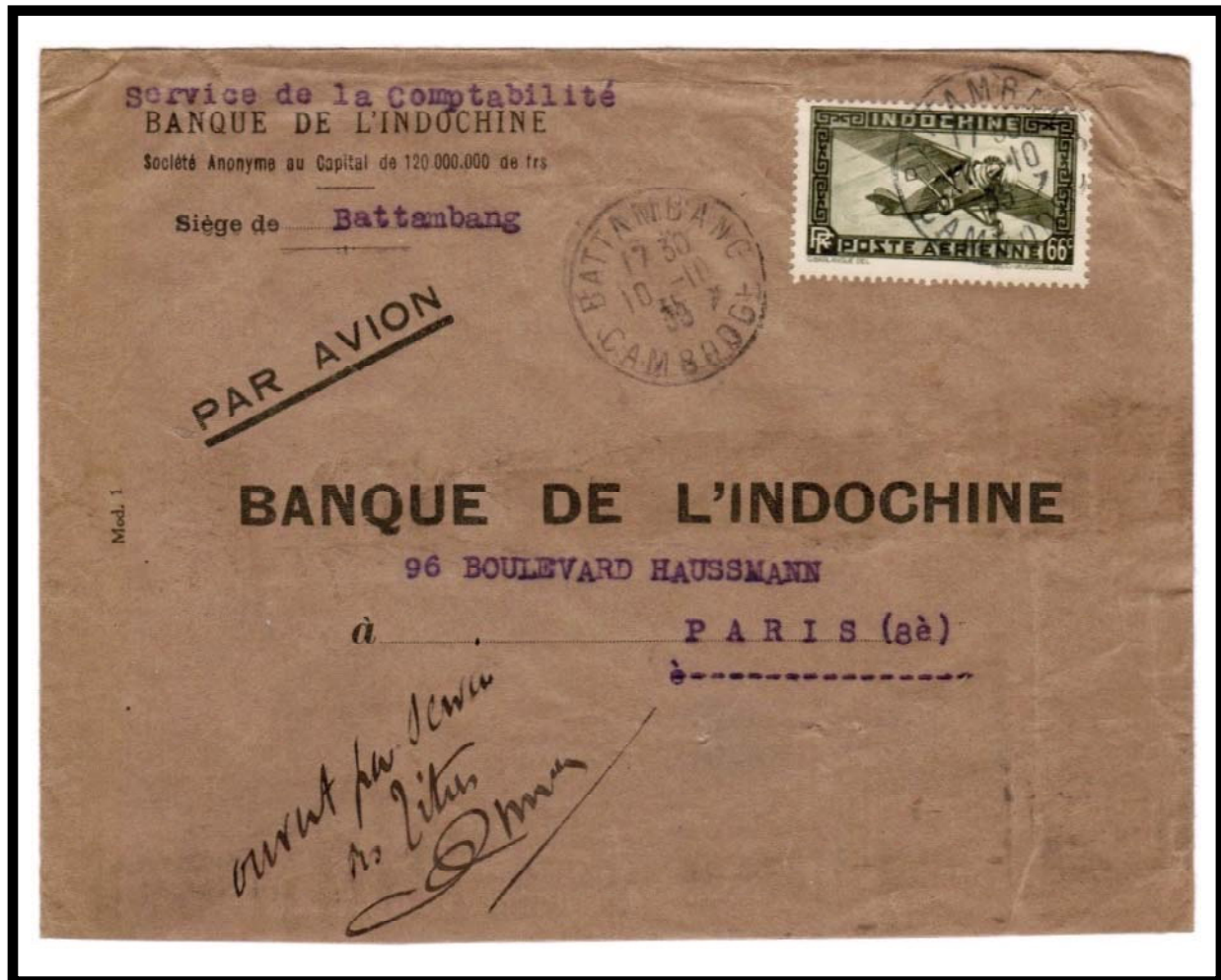
POSTAL MARKINGS
BATTAMBANG CAMBODGE 2-10 48
registration label
REVERSE
PNOMPENH CAMBODGE 4-10 48

BATTAMBANG CAMBODGE

Battambang employed two varieties of type G postmarks. The plain type G postmark appeared first in 1927.



POSTMARK TYPE: G
PERIOD OF USE: 1927-39



POSTAL MARKINGS
BATTAMBANG CAMBODGE 10-10 35
REVERSE
SAIGON-CENTRAL COCHINCHINE 12 OCT 35

BATTAMBANG CAMBODGE

Battambang's second type G postmark, type G1, appeared in 1934. It is characterized by the separators in the outer ring.



POSTMARK TYPE: G1
PERIOD OF USE: 1934-39



POSTAL MARKINGS
BATTAMBANG CAMBODGE 29-12 38
REVERSE
SAIGON-CENTRAL COCHINCHINE 31-12 38

BATTAMBANG CAMBODGE

The type G1(t) postmark used dashes to separate the words "BATTAMBANG" and "CAMBODGE." This postmark was in service for three years around the time of Cambodia's independence.



POSTMARK TYPE: G1(t)
PERIOD OF USE: 1950-52



POSTAL MARKINGS

BATTAMBANG CAMBODGE 19-4 1951
registration label

REVERSE

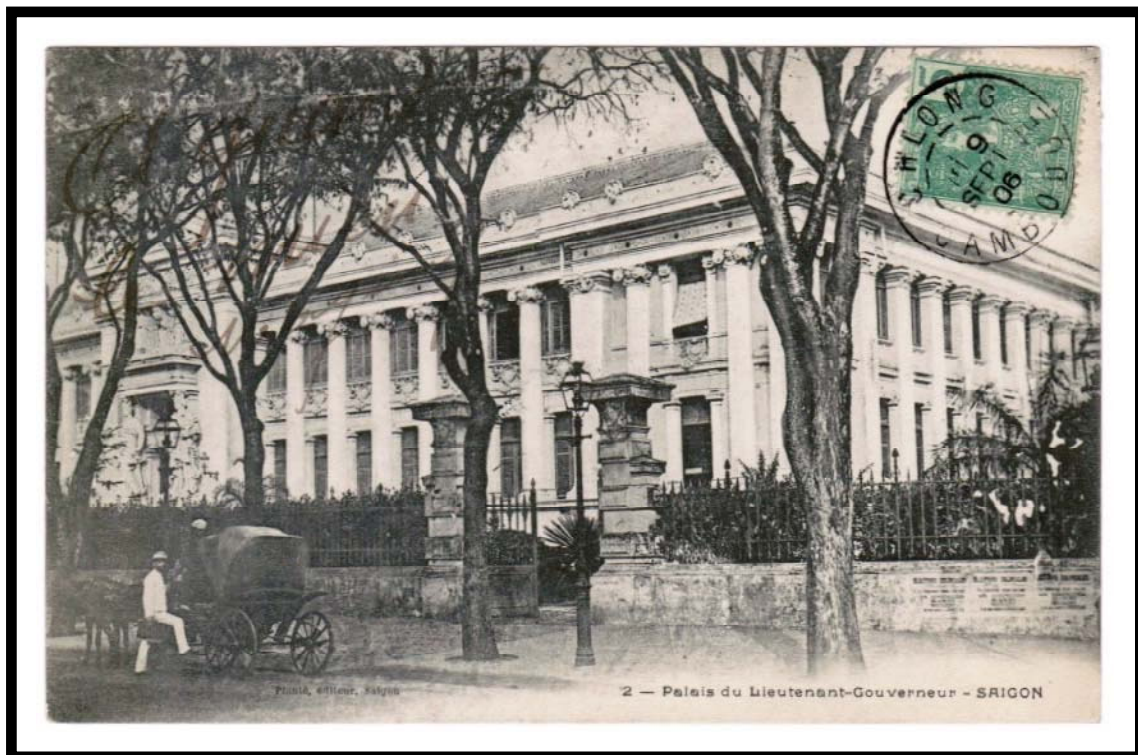
PNOMPENH CAMBODGE 21-4 1951
STRASBOURG R.P. BAS-RHIN 30-4 1951
STRASBOURG MEINAU BAS-RHIN 30-4 1951

CHLONG CAMBODGE

The Chlong post office opened on 28 March 1904. The only postmark with the "CHLONG" spelling was a type E2 device. It remained in service for nearly a quarter century.



POSTMARK TYPE: E2
PERIOD OF USE: 1905-29



POSTAL MARKINGS
CHLONG CAMBODGE 9 SEPT -06
REVERSE
PNOMPENH CAMBODGE 12 SEPT 06
YOKOHAMA A MARSEILLE L.N. N° 6 22 SEPT 06

CHHLONG CAMBODGE

In 1927, the spelling of the town's name changed from "Chlong" to "Chhlong." The first postmark that employed the new spelling was a type G(l) device. With this style, the month was indicated with letters rather than a number. Its earliest recorded use is from 1930.



POSTMARK TYPE: G(l)
PERIOD OF USE: 1930-31



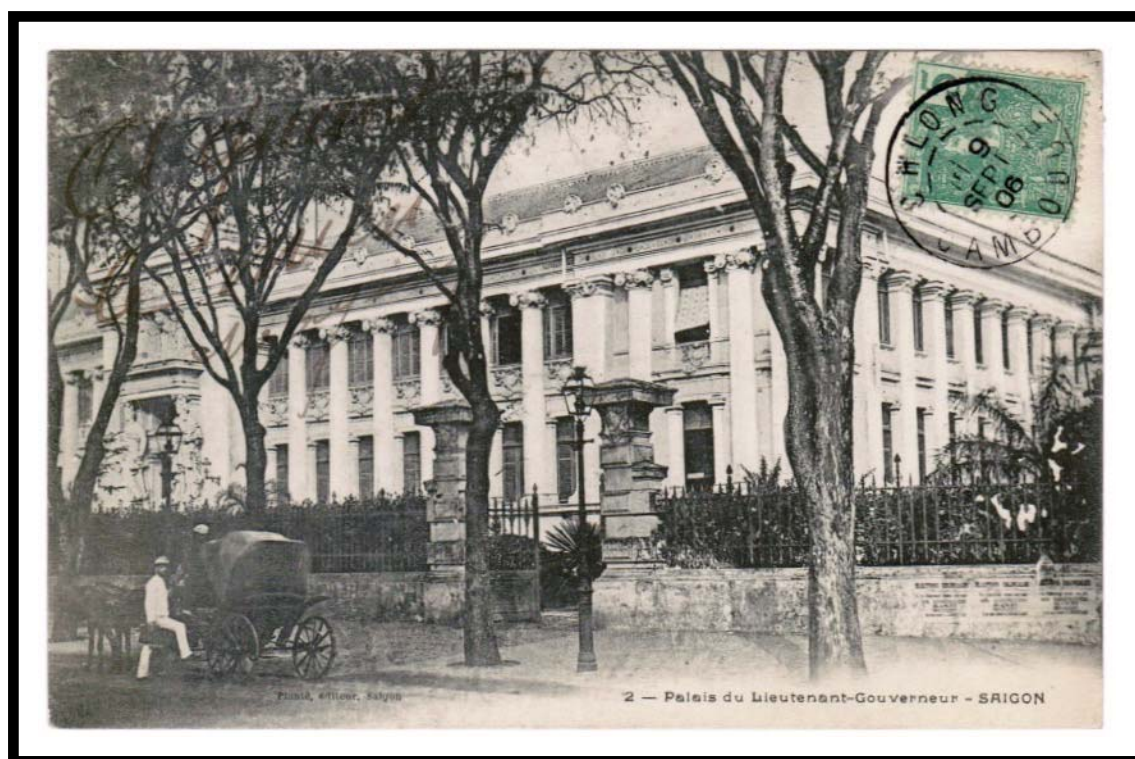
POSTAL MARKINGS
CHHLONG CAMBODGE 28 MARS 30

CHLONG CAMBODGE

The Chlong post office opened on 28 March 1904. The only postmark with the “CHLONG” spelling was a type E2 device. It remained in service for nearly a quarter century.



POSTMARK TYPE: E2
PERIOD OF USE: 1905-29



POSTAL MARKINGS
CHLONG CAMBODGE 9 SEPT -06
REVERSE
PNOMPENH CAMBODGE 12 SEPT 06
YOKOHAMA A MARSEILLE L.N. N° 6 22 SEPT 06

CHHLONG CAMBODGE

In 1927, the spelling of the town's name changed from "Chlong" to "Chhlong." The first postmark that employed the new spelling was a type G(l) device. With this style, the month was indicated with letters rather than a number. Its earliest recorded use is from 1930.



POSTMARK TYPE: G(l)
PERIOD OF USE: 1930-31



POSTAL MARKINGS
CHHLONG CAMBODGE 28 MARS 30

KAMPOT CAMBODGE

Even though the post opened at Kampot in 1882, its first known postmark, using the type E2 format, appeared in 1891. This postmark remained in service for three decades.



POSTMARK TYPE: E2
PERIOD OF USE: 1891-1921



POSTAL MARKINGS

KAMPOT CAMBODGE 2 OCT 04
SAIGON-CENTRAL COCHINCHINE 7 OCT 04
INDE PONDICHERY 18 OCT 04

KAMPOT CAMBODGE

The E2(ch) variation in Kampot's type E2 postmark with numerals indicating the month, first appeared in 1913. This postmark remained in service for a decade.



POSTMARK TYPE: E2 (ch)
PERIOD OF USE: 1913-24



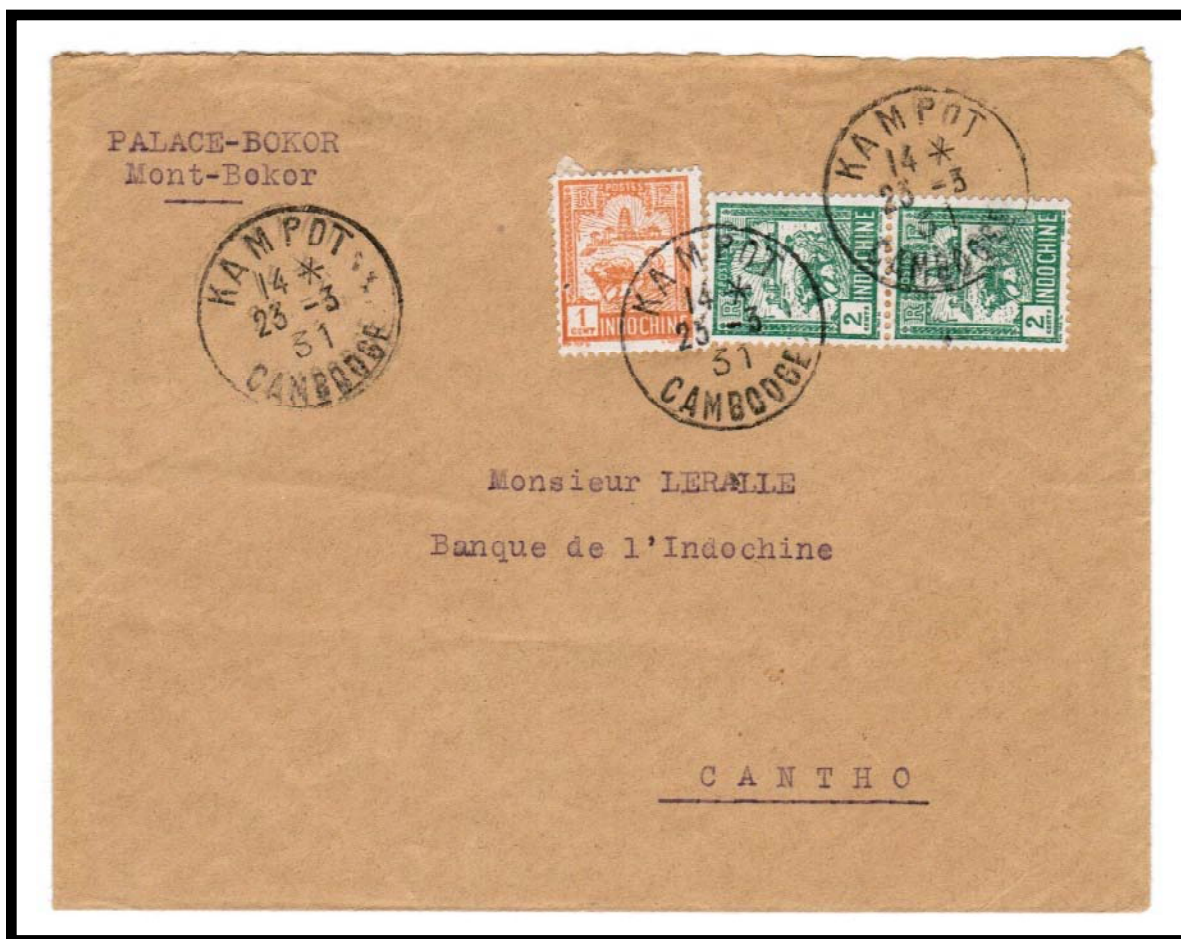
POSTAL MARKINGS
KAMPOT CAMBODGE 9-4 13

KAMPOT CAMBODGE

The Kampot post office introduced its type G postmark in 1930. Its period of use overlapped that of the longer-lived type G1 device.



POSTMARK TYPE: G
PERIOD OF USE: 1930-48



POSTAL MARKINGS
KAMPOT CAMBODGE 23-3 31
REVERSE
CANTHO COCHINCHINE 7-4 31

KAMPOT CAMBODGE

This example from 1948 is the latest known use for Kampot's type G postmark. The type G postmark was in service for nearly two decades.



new one

POSTMARK TYPE: G
PERIOD OF USE: 1930-48



POSTAL MARKINGS

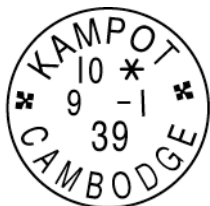
KAMPOT CAMBODGE 13-12 1948
registration label

REVERSE

PHNOMPENH CAMBODGE 14-12 48

KAMPOT
CAMBODIA

Kampot's type G1 postmark was long lived having seen service for over a quarter of a century.



POSTMARK TYPE: G1
PERIOD OF USE: 1924-52



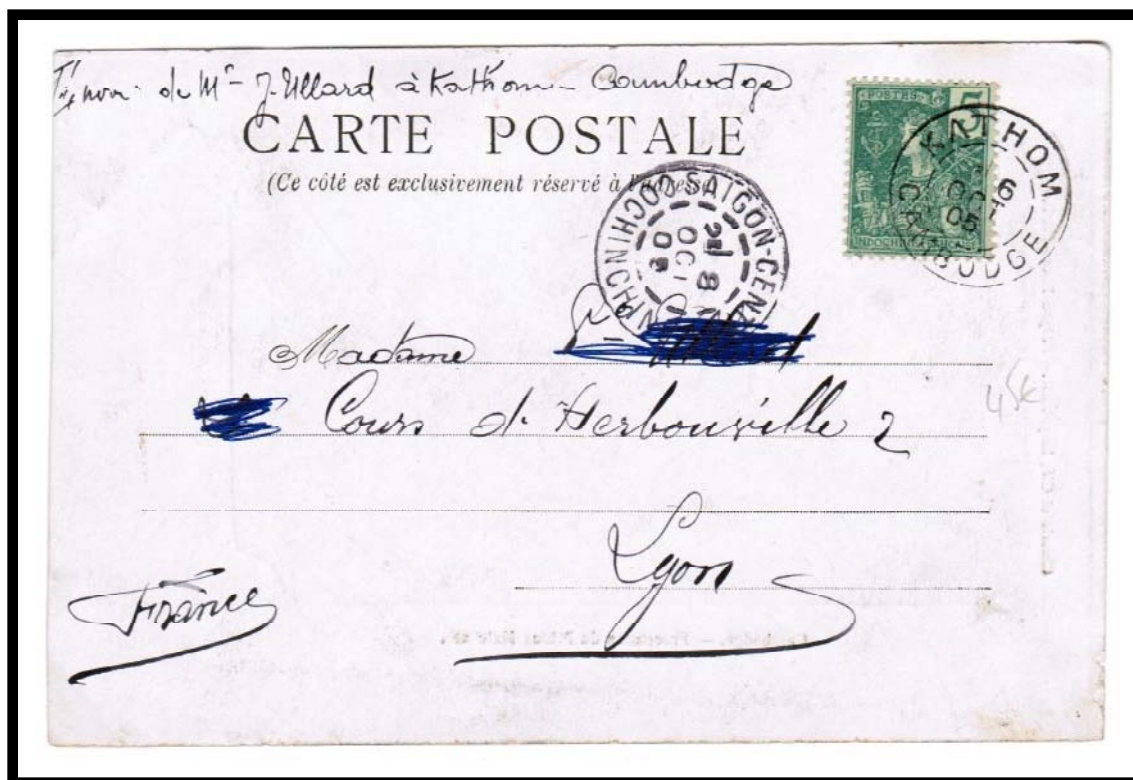
POSTAL MARKINGS
KAMPOT CAMBODGE 9-1 39
REVERSE
KAMPOT CAMBODGE 9-1 39
PHNOMPENH CAMBODGE 10-1 39
PARIS VIII DISTRIBUTION 21 • I 1939

KATHOM CAMBODGE

Even though the Kathom post office opened in 1884, the earliest known postmark is the type E2 format. The E2 postmark was in service for two decades and the earliest recorded use is from 1905.



POSTMARK TYPE: E2
PERIOD OF USE: 1905-24



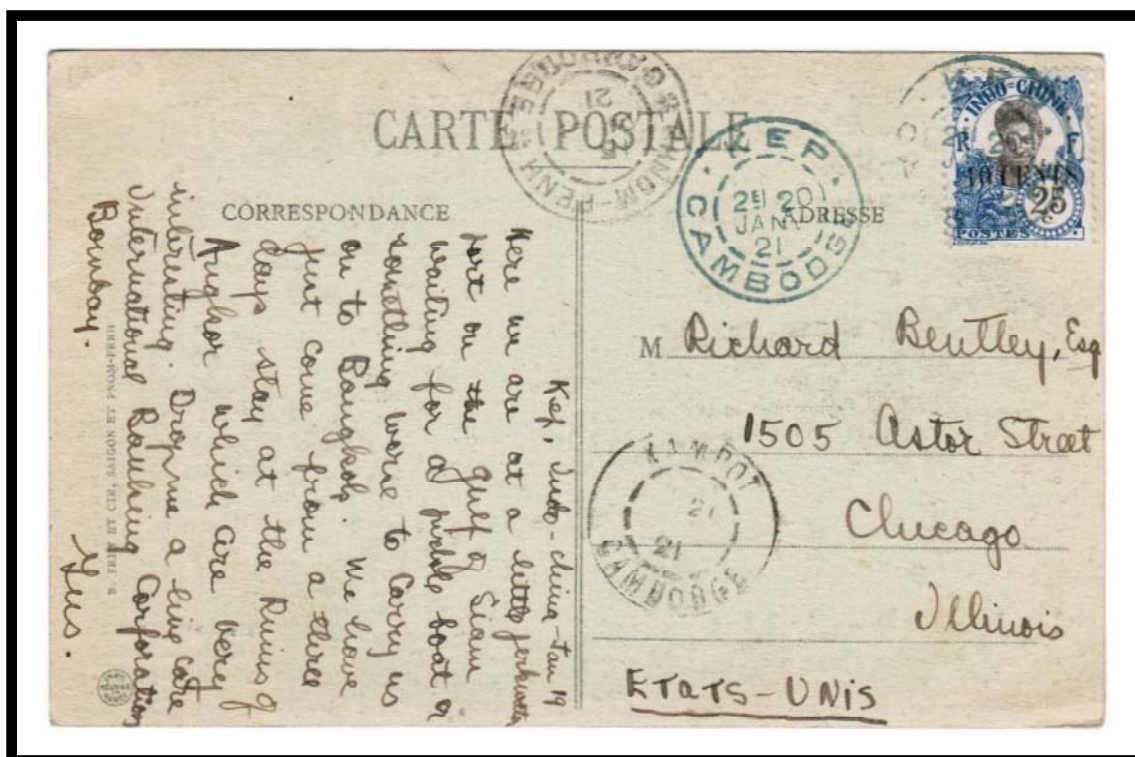
POSTAL MARKINGS
KATHOM CAMBODGE 6 OCT 05
SAIGON-CENTRAL COCHINCHINE 8 OCT 05

KEP CAMBODIA

Kep's type F2 postmark was struck with blue ink on this 1921 postcard to the United States. This example is the earliest known use of Kep's type F2 postmark.



POSTMARK TYPE: F2
PERIOD OF USE: 1921-29



POSTAL MARKINGS

KEP CAMBODGE 20 JANV 21
KAMPOT CAMBODGE 21 JANV 21
PHNOM-PENH CAMBODGE 21-1 21

KEP
CAMBODGE

The post office at Kep continued operations into the modern era. The type G postmark remained in service nearly all the way through World War II.



POSTMARK TYPE: G
PERIOD OF USE: 1931-44



POSTAL MARKINGS

KEP CAMBODGE 13-1 36
airmail label

"PAR AVION JUSQU'A MARSEILLE" routing instruction

REVERSE

KAMPOT CAMBODGE 14-1 36
PNOMPENH CAMBODGE 15-1 36

KEP CAMBODGE

Kep introduced its type G1 postmark in 1926. While the same postmark format was in use for over two decades, its appearance did change over this time span.



POSTMARK TYPE: G1
PERIOD OF USE: 1926-49



POSTAL MARKINGS
KEP CAMBODGE 15-7 28

KEP CAMBODGE

The outer ring of Kep's type G1 postmark was rotated clockwise with respect to the date plug in the center. Kep's type G1 postmark remained in use for a quarter century.



POSTMARK TYPE: G1
PERIOD OF USE: 1926-49



POSTAL MARKINGS
KEP CAMBODGE 1-12 48
registration label

KHONE CAMBODGE

Located near the Lao border, the Khone post office was only open in 1892-93 as a Cambodian post office. As a consequence of conclusion of hostilities with Siam, Khone became a part of Laos. Khone's type E2 postmark is only known from a single year, 1893.



POSTMARK TYPE: E2
PERIOD OF USE: 1893



POSTAL MARKINGS

CORPS EXPED^{RE} CAMBODGE 27 SEPT 93

KHONE CAMBODGE 27 SEPT 93

CORPS EXP. TONKIN LIGNE N.8 7 OCT 93

REVERSE

PNOMPENH CAMBODGE 1 OCT 93

SAIGON-CENTRAL COCHINCHINE 3 OCT 93

POITIERS VIENNE 3 NOV 93

KHONG CAMBODGE

When the post office on the island of Khong first opened, it was Lao territory. But during the period 1894-5, Khong was considered to be in Cambodia. Hence, for a short period of two years, Khong's type E2 postmark had "CAMBODGE" located at its base.



POSTMARK TYPE: E2 (14t)
PERIOD OF USE: 1894-95



POSTAL MARKINGS
KHONG CAMBODGE 20 AOUT 94

REVERSE

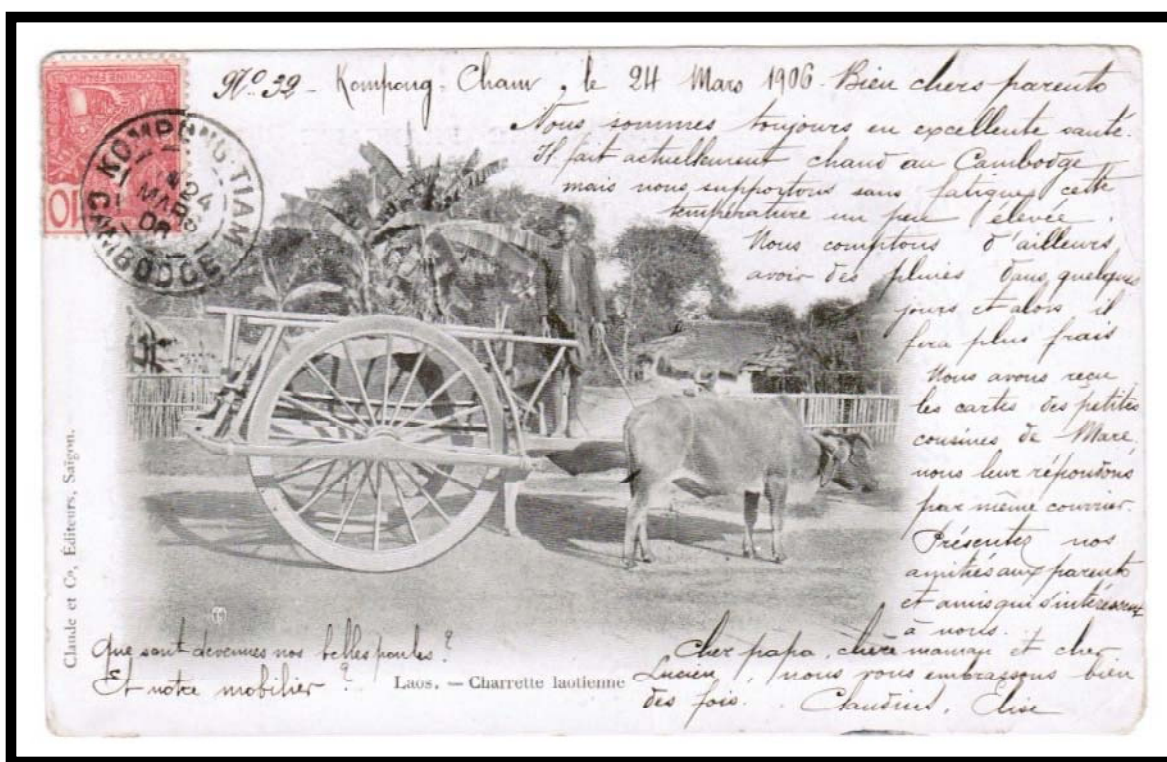
SAIGON-CENTRAL COCHINCHINE 29 AOUT 94
NANCY MEURTHE ET MOSELLE 30 SEPT 04
NANCY MEURTHE ET MOSELLE 1 OCT 04

KOMPONG-TIAM CAMBODGE

Kompong-Tiam's post office opened in 1884. As noted in the manuscript heading on this postcard, the town with the postmark spelling "KOMPONG-TIAM" was also known as "Kompong-Cham." Its first postmark was in the type E2 format.



POSTMARK TYPE: E2
PERIOD OF USE: 1894-1925



POSTAL MARKINGS

KOMPONG-TIAM CAMBODGE 24 MARS 06

REVERSE

KOMPONG-TIAM CAMBODGE 24 MARS 06

PNOMPENH CAMBODGE 25 MARS 06

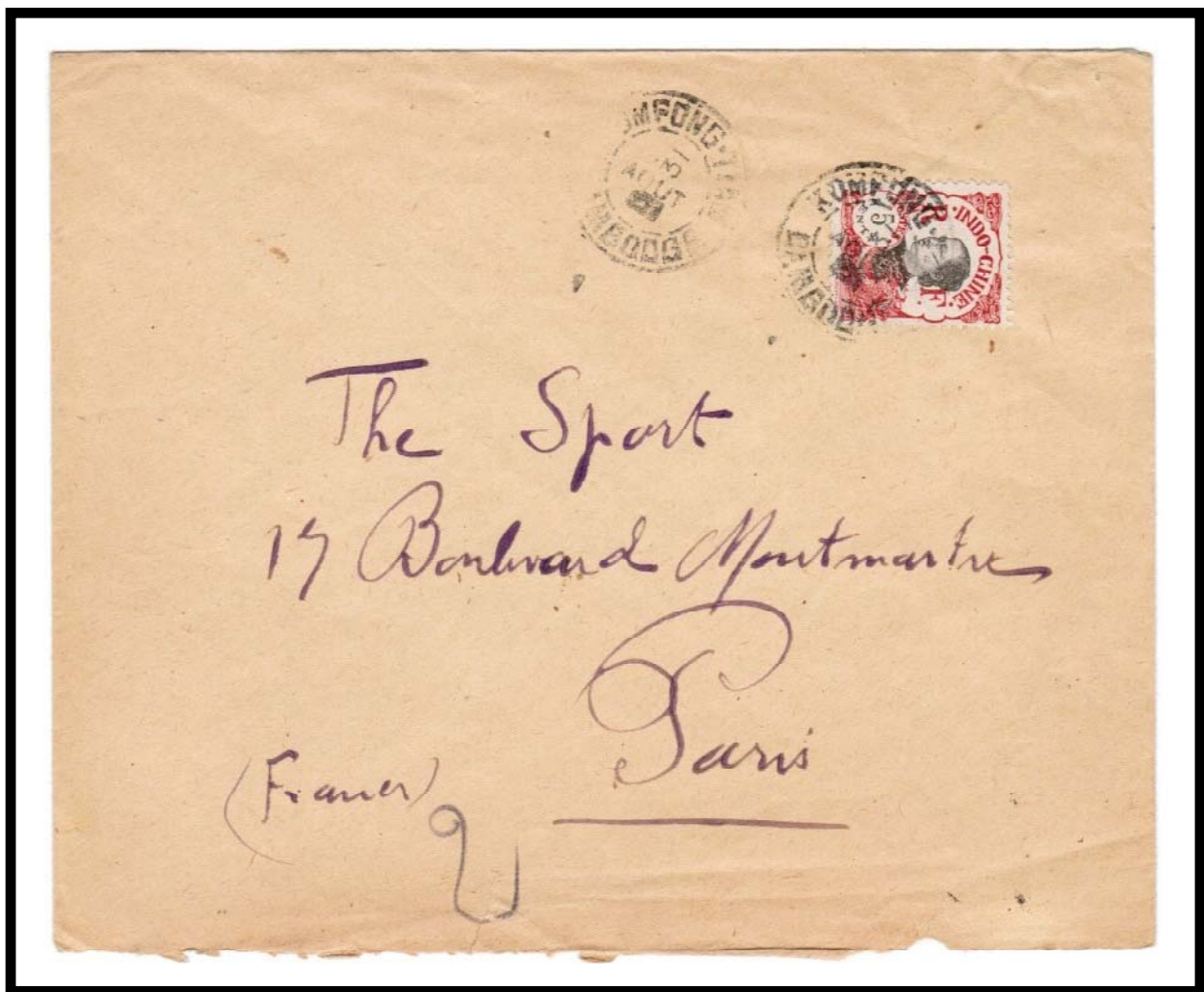
SAIGON-CENTRAL COCHINCHINE 27 MARS 06

KOMPONG-TIAM
CAMBODGE

The type E2 postmark was retired from service in service in 1925. This example is the last known use of the postmark.



POSTMARK TYPE: E2
PERIOD OF USE: 1894-1925



POSTAL MARKINGS
KOMPONG-TIAM CAMBODGE 31 AOUT 25
REVERSE
PNOMPENH CAMBODGE 1-9 25

KOMPONGTIAM CAMBODGE

The last year of service for Kompongtiām's uncommon and short-lived type F1(ch) postmark was 1925.



POSTMARK TYPE: F1(ch)
PERIOD OF USE: 1922-25



POSTAL MARKINGS
KOMPONGTIAM CAMBODGE 10-12 25

KOMPONG TIAM CAMBODGE

The only postmark that used the "KOMPONG TIAM" spelling with a space between "KOMPONG" and "TIAM" was a type G1 device. It is only known from 1928, the year that the town's name changed to Kompongcham.



POSTMARK TYPE: G1
PERIOD OF USE: 1928



POSTAL MARKINGS
KOMPONG TIAM CAMBODGE 7-4 28
REVERSE
PNOMPENH CAMBODGE 8-4 28

KOMPONGCHAM
CAMBODIA

Kompong-Tiam formally became Kompongcham around 1928. Its first postmark was a type G1 device which lasted through World War II.



POSTMARK TYPE: G1
PERIOD OF USE: 1930-49



POSTAL MARKINGS

KOMPONGCHAM CAMBODGE 12-7 35

airmail label

REVERSE

PNOMPENH CAMBODGE 13-7 35

SAIGON-CENTRAL COCHINCHINE 14-7 35

CALCUTTA G.P.O. D.B.N. 15 JLY.35

KOMPONGCHAM CAMBODIA

Kompong-Tiam formally became Kompongcham around 1928. Its first postmark was a type G1 device which lasted through World War II. In later years, the year was specified with four digits.



POSTMARK TYPE: G1
PERIOD OF USE: 1930-49



POSTAL MARKINGS
KOMPONGCHAM CAMBODGE 7-8 1949

KOMPONGCHAM CAMBODGE

Among the several variations, the non-hyphenated spelling of "KOMPONCHAM" appeared on a type G postmark. This example is the earliest known use from 1932.



POSTMARK TYPE: G
PERIOD OF USE: 1932-37



POSTAL MARKINGS
KOMPONGCHAM CAMBODGE 13-6 32
registry and airmail labels
REVERSE
PNOM-PENH CAMBODGE 15-6 32
MARSEILLE-GARE-AVION 26-6 32

KOMPONG CHAM
CAMBODGE

This version of one of Komponcham's last postmarks included the unique spelling "KOMPONG CHAM" with a space and no hyphen.



POSTMARK TYPE: G1(t)
PERIOD OF USE: 1949



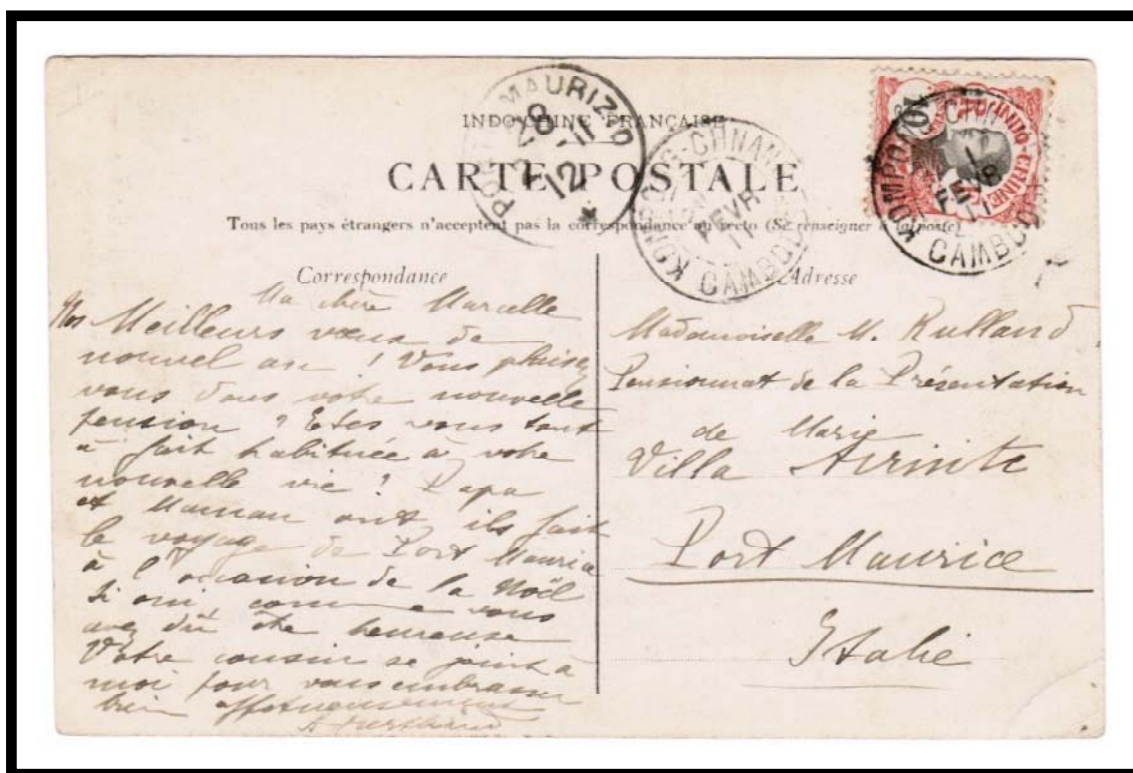
POSTAL MARKINGS
KOMPONG CHAM CAMBODGE 21-3 1949
REVERSE
KOMPONG CHAM CAMBODGE 21-3 1949

KOMPONG-CHNANG CAMBODGE

Kompong-Chnang opened its post office in the nineteenth century. The first known postmark was in the type E2 format. It remained in service for over a quarter of a century.



POSTMARK TYPE: E2
PERIOD OF USE: 1900-27



POSTAL MARKINGS

KOMPONG-CHNANG CAMBODGE 1 FEB 11
PORTO MAURIZIO 28 2 11

KOMPONG-CHNANG CAMBODGE

Kompong-Chnang opened its post office in the nineteenth century. Kompong-Chnang's first known postmark was in the type E2 format. It remained in service for over a quarter of a century.



POSTMARK TYPE: E2
PERIOD OF USE: 1900-27



POSTAL MARKINGS

KOMPONG-CHNANG CAMBODGE 17 OCT 04
PNOMPENH CAMBODGE 18 OCT 04
plain "T" with handwritten due amount
ALGER ALGERIE 17-11 04

KOMPONG-CHNANG
CAMBODGE

After having been in service for over a quarter of a century, Kompong-Chnang's type E2 postmark was retired in 1927. This example from 7 December 1927 is latest known use of this postmark.



POSTMARK TYPE: E2
PERIOD OF USE: 1900-27



POSTAL MARKINGS
KOMPONG-CHNANG CAMBODGE 7 DEC 27
REVERSE
PNOMPENH CAMBODGE 8-12 27

KOMPONGCHNANG CAMBODGE

The first postmark with the non-hyphenated "KOMPONGCHNANG" spelling was in the type G1 format. The type G postmark remained in service for a decade and a half.



POSTMARK TYPE: G
PERIOD OF USE: 1928-44



POSTAL MARKINGS
KOMPONGCHNANG CAMBODGE 14-8 35
REVERSE
PNOMPENH CAMBODGE 14-8 35
SI ETIENNE R.P. LOIRE 24 VIII 36

KOMPONGCHNANG CAMBODGE

Kompongchnang's type G1 postmark was in service until France granted independence to Cambodia.



POSTMARK TYPE: G1
PERIOD OF USE: 1947-50



POSTAL MARKINGS
KOMPONGCHNANG CAMBODGE 29-10 1950
REVERSE
PHNOMPENH CAMBODGE 29-10 1950

KOMPONGCHNANG CAMBODGE

Kompongchnang's type G1(t) postmark was the town's last one that canceled Indochinese postage stamps. It was in service until 1952.



POSTMARK TYPE: G1(t)
PERIOD OF USE: 1951-52



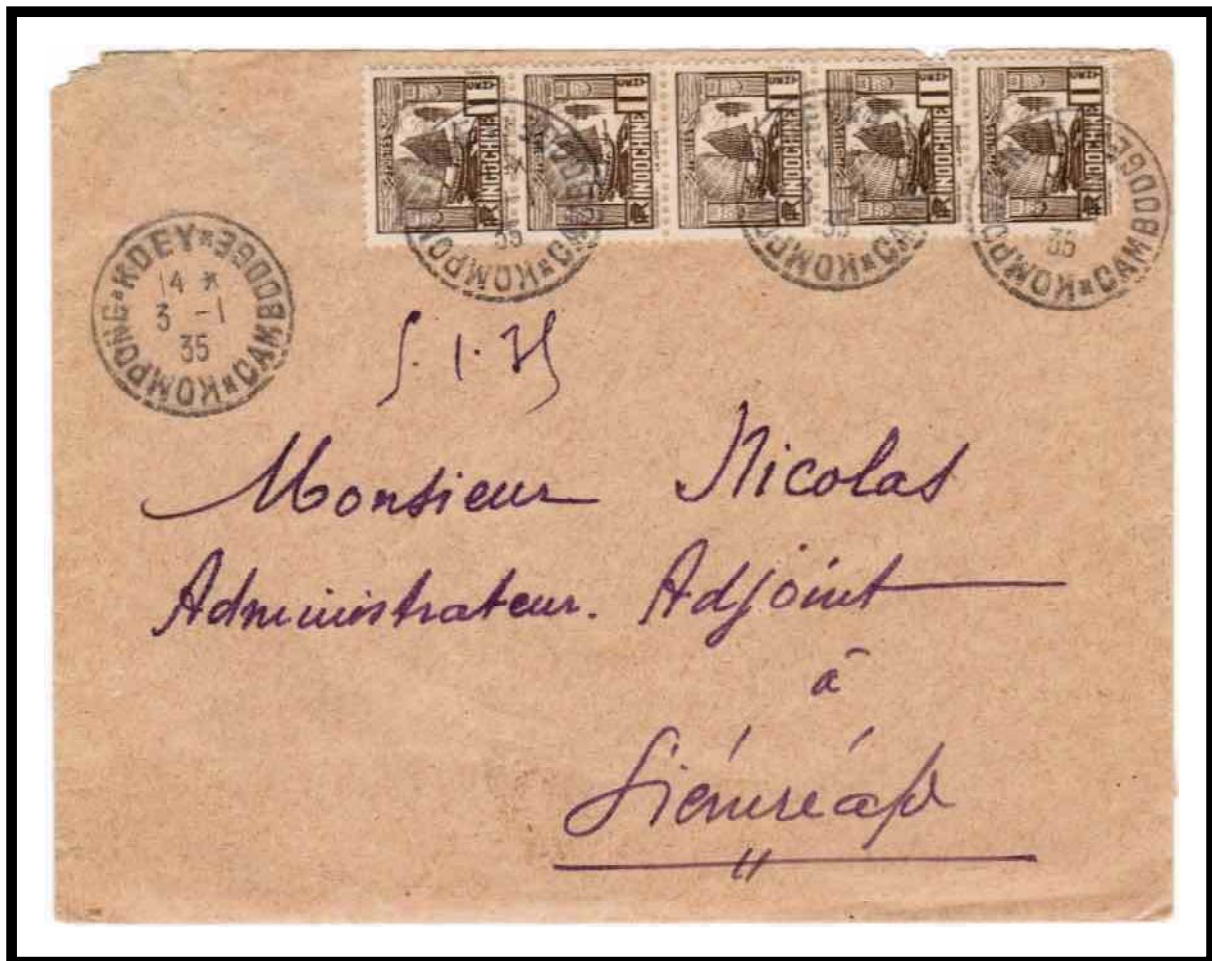
POSTAL MARKINGS
KOMPONGCHNANG CAMBODGE 16-3 1951

KOMPONG-KDEY
CAMBODGE

Effective 11 July 1929, Kompong-Kedey officially changed its name to Kompong-Kdey. The only postmark that ever used this spelling was a type G1 device.



POSTMARK TYPE: G1
PERIOD OF USE: 1932-39



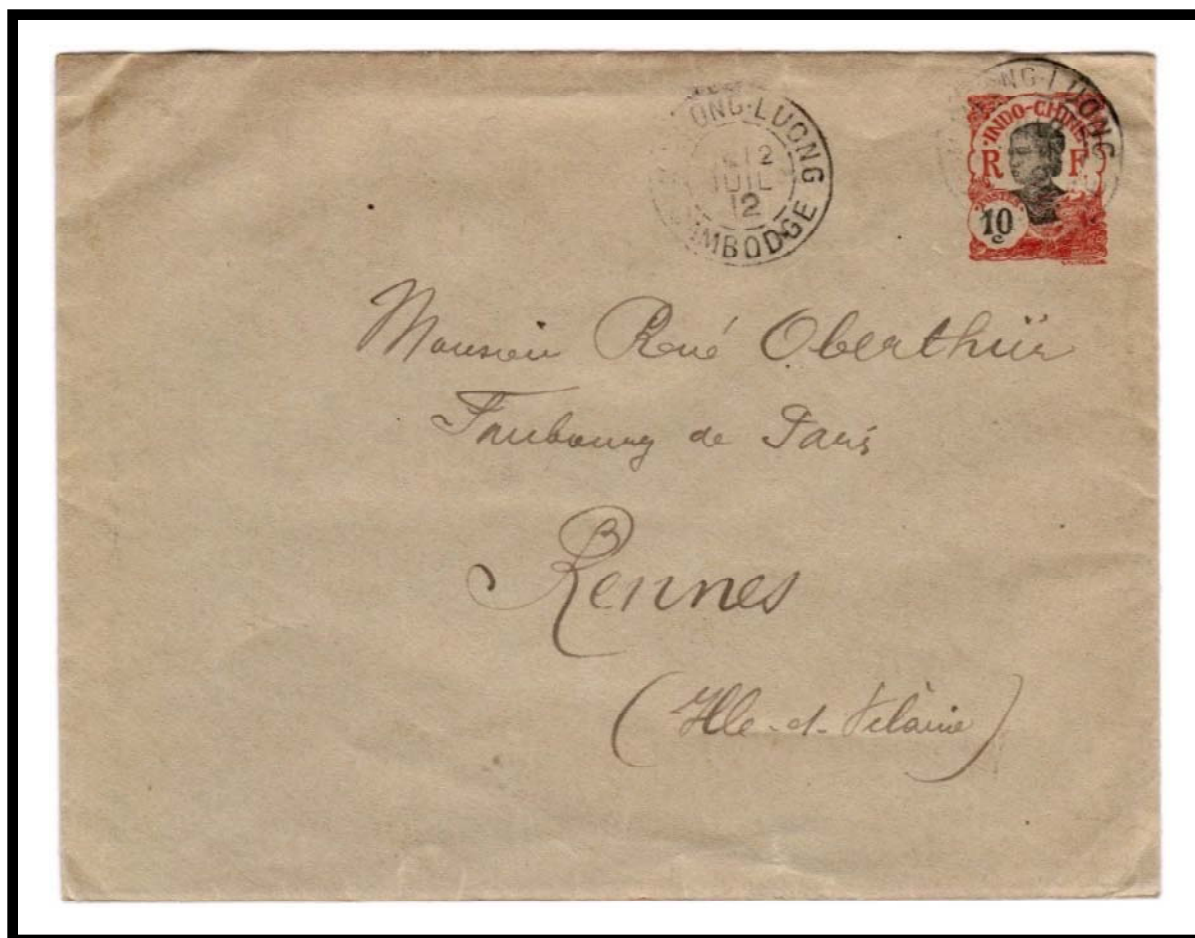
POSTAL MARKINGS
KOMPONG-KDEY CAMBODGE 3-1 35
REVERSE
SIEMREAP CAMBODGE

KOMPONG-LUONG CAMBODGE

Although its post office was reportedly open since 1884, Kompong-Luong's first known postmark is a type E2 device. The postmark remained in service for two decades until it was replaced by a type G postmark.



POSTMARK TYPE: E2
PERIOD OF USE: 1904-28



POSTAL MARKINGS
KOMPONG-LUONG CAMBODGE 12 JUIL 12
REVERSE
PNOMPENH CAMBODGE 13 JUIL 12

KOMPONGLUONG CAMBODGE

The first and only postmark from the French period that used the non-hyphenated “KOMPONGLUONG” spelling was a type G device. This example is the latest known use of Kompongluong’s type G postmark.



POSTMARK TYPE: G
PERIOD OF USE: 1931-49



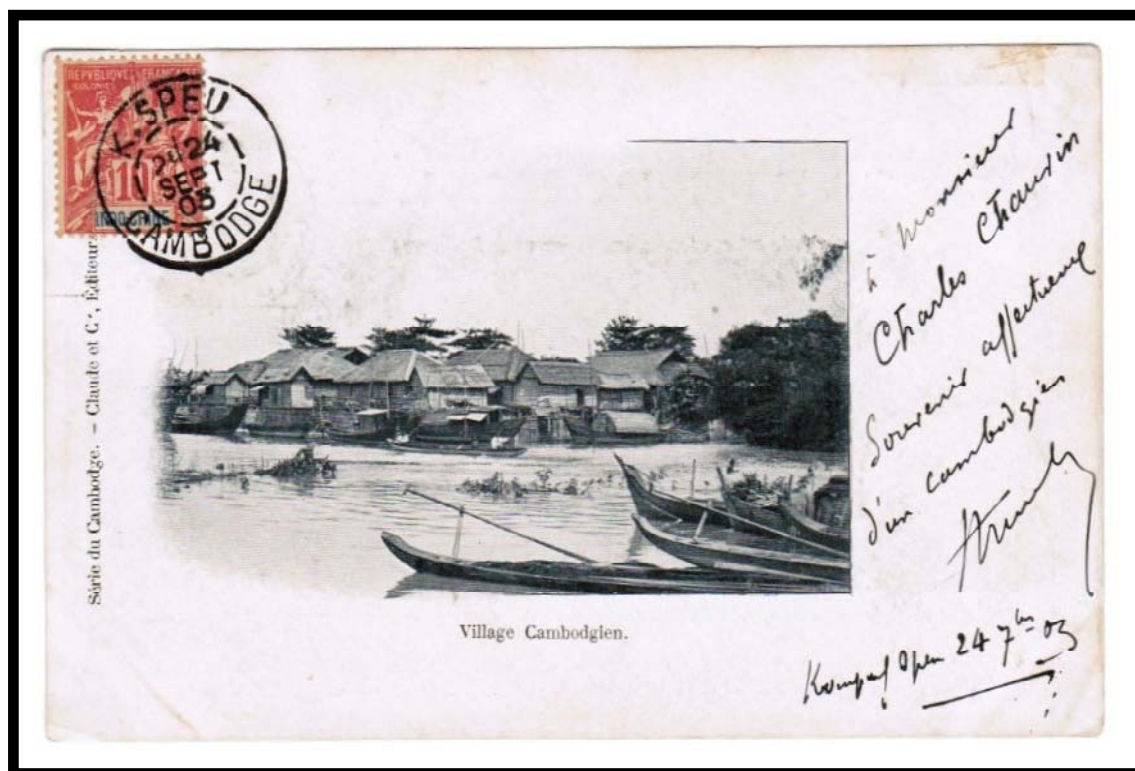
POSTAL MARKINGS
KOMPONGLUONG CAMBODGE 27-10 49
REVERSE
PHNOMPENH CAMBODGE 28-10 49

K. SPEU CAMBODGE

Komponspeu was abbreviated "K. Speu" for the town's first postmark, a type E3 (10t) device. The postmark with the abbreviation lasted nearly three decades.



POSTMARK TYPE: E3 (10t)
PERIOD OF USE: 1901-29



POSTAL MARKINGS

K. SPEU CAMBODGE 24 SEPT 03

REVERSE

K. SPEU CAMBODGE 24 SEPT 03

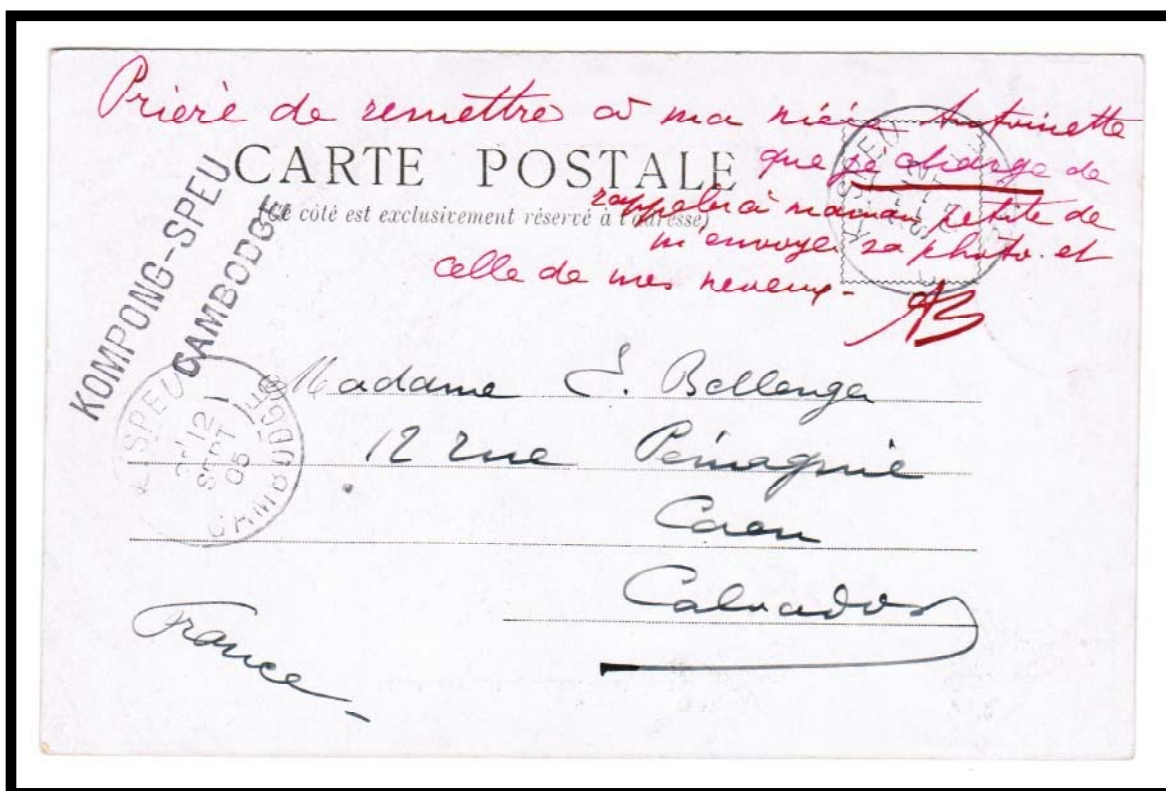
KOMPONG-SPEU CAMBODGE

In addition to circular postmarks, post offices also had straight-line handstamps that were used for indicating the post office that had taken an action such as preparing a money order. Occasionally, the straight-line handstamps are found on regular mail.

KOMPONG-SPEU
CAMBODGE



POSTMARK TYPE: E3(10t)
PERIOD OF USE: 1901-29



POSTAL MARKINGS

K. SPEU CAMBODGE 12 SEPT 05
straight-line KOMPONG-SPEU CAMBODGE

REVERSE

K. SPEU CAMBODGE 12 SEPT 05

K. SPEU
CAMBODGE

In the E3(10t)(ch) variation, the month was specified with a numeral instead of an abbreviation. This example from September 1927 is the latest known use of this postmark.



POSTMARK TYPE: E3(10t)(ch)
PERIOD OF USE: 1913-27



POSTAL MARKINGS
K. SPEU CAMBODGE 17 9 27
framed R with manuscript registration number
REVERSE
PNOM-PENH CAMBODGE 17 SEPT 27

KOMPONGSPEU
CAMBODGE

The type G device for Kompongseu deviated from earlier postmarks and used the full spelling for the town's name.



POSTMARK TYPE: G
PERIOD OF USE: 1929-49



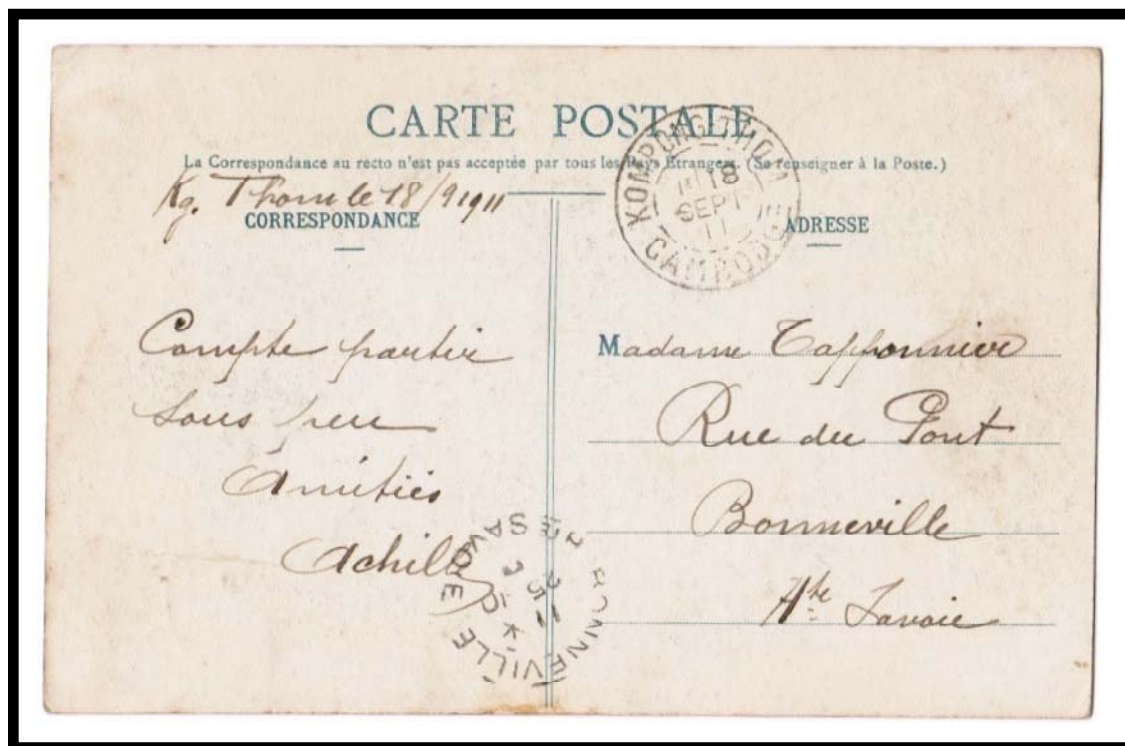
POSTAL MARKINGS
KOMPONGSPEU CAMBODGE 12-9 36
airmail label
REVERSE
PNOMPENH CAMBODGE 12-9 36

KOMPONG-THOM CAMBODIA

The first postmark format recorded for Kompongthom was a type E2 device. It was the only postmark that used the hyphenated "KOMPONG-THOM" spelling. The type E2 postmark remained in service for two decades at the beginning of the twentieth century.



POSTMARK TYPE: E2
PERIOD OF USE: 1901-21



POSTAL MARKINGS

KOMPONG-THOM CAMBODGE 18 SEPT 11
BONNEVILLE HIE SAVOIE 25-10 06

REVERSE

KOMPONG-THOM CAMBODGE 18 SEPT 11

KOMPONGTHOM CAMBODGE

The first postmark with the non-hyphenated "Kompongthom" spelling was a short-lived canceller. After only two years, a type G device replaced the type F1 postmark.



POSTMARK TYPE: F1
PERIOD OF USE: 1925-27



POSTAL MARKINGS

KOMPONGTHOM CAMBODGE 26 FEVR 26 (blue)
WASHINGTON VT. MAR 30 1926

KOMPONGTHOM
CAMBODGE

The type G format was one of the postmark layouts that employed the non-hyphenated "KOMPONGTHOM" spelling.



POSTMARK TYPE: G
PERIOD OF USE: 1929-35



POSTAL MARKINGS
KOMPONGTHOM CAMBODGE 8-9 33
PAR AVION JUSQU'A MARSEILLE routing instruction
REVERSE
PARIS XI DISTRIBUTION 18 • IX 1933

KOMPONGTHOM
CAMBODIA

Through the 1930s and World War II, the Kompongthom spelling was employed for the town's type G1 postmark.



POSTMARK TYPE: G
PERIOD OF USE: 1930-44



POSTAL MARKINGS

KOMPONGTHOM CAMBODGE 20-5 36
PAR AVION JUSQU'A MARSEILLE

REVERSE

PNOMPENH CAMBODGE 20-5 36
MARSEILLE-GARE-AVION BCHES DU RHONE 31 • V 1936

KOMPONGTHOM CAMBODGE

Kompongthom was one of the very few post offices to ever use the type G4 postmark. This was the last postmark that employed the "KOMPONGTHOM" spelling as a single word.



POSTMARK TYPE: G4
PERIOD OF USE: 1948-50



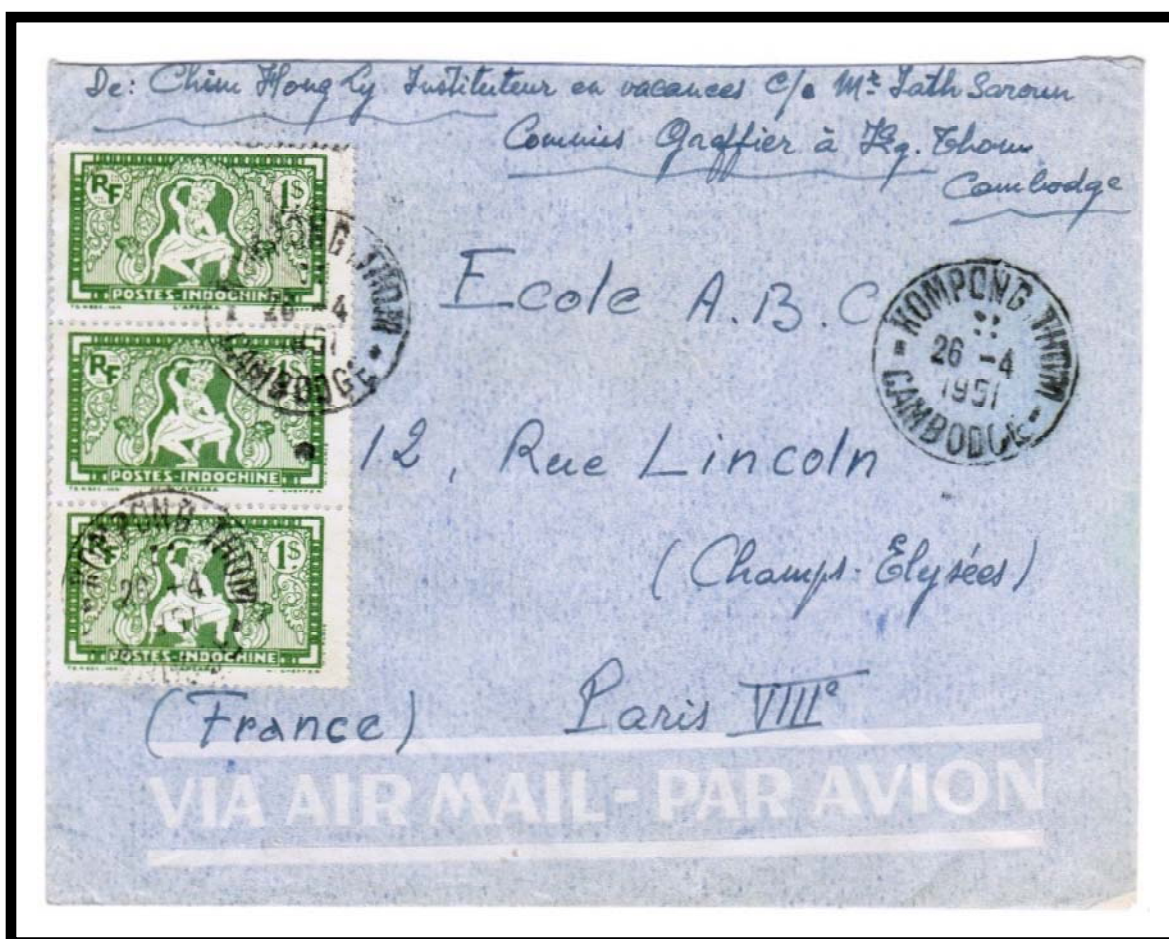
POSTAL MARKINGS
KOMPONGTHOM CAMBODGE 12-7 48
REVERSE
KOMPONGTHOM CAMBODGE 12-7 48
PNOMPENH CAMBODGE 14-7 48

KOMPONG THOM
CAMBODGE

Only a single postmark [in the type G1(t) format] used the spelling variation
"KOMPONG THOM" with a space before "THOM."



POSTMARK TYPE: G1(t)
PERIOD OF USE: 1949-51



POSTAL MARKINGS
KOMPONG THOM CAMBODGE 26-4 1951

KOMPONG-TRABEC CAMBODGE

The only postmark that employed the hyphenated "KOMPONG-TRABEC" spelling was a type F2 device. The last known year of use for this postmark was 1926.



POSTMARK TYPE: F2
PERIOD OF USE: 1923-26



POSTAL MARKINGS
KOMPONG-TRABEC CAMBODGE 14 JUIN 26
REVERSE
KOMPONG-TRABEC CAMBODGE 14 JUIN 26

KOMPONGTRABEC CAMBODGE

Kompongtrabec's long-lived type G postmark remained in service for over two decades. The type G postmark was the only format that used the non-hyphenated "KOMPONGTRABEC" spelling for the town's name.



POSTMARK TYPE: G
PERIOD OF USE: 1928-51



POSTAL MARKINGS
KOMPONGTRABEC CAMBODGE 7-3 1951
airmail label

KOMPONGTRACH CAMBODIA

The first postmark with the non-hyphenated spelling was a type G device. It remained in service into the World War II period.



POSTMARK TYPE: G
PERIOD OF USE: 1929-44



POSTAL MARKINGS
KOMPONGTRACH CAMBODGE 3-9 36
REVERSE
PNOMPENH CAMBODGE 4-9 36

KOMPONGTRACH
CAMBODGE

The non-hyphenated "KOMPONGTRACH" spelling last appeared in a type G1 format postmark.



POSTMARK TYPE: G1
PERIOD OF USE: 1932-44



POSTAL MARKINGS
KOMPONGTRACH CAMBODGE 4-3 37
REVERSE
SAIGON-CENTRAL COCHINCHINE 5-3 37

KHONG
CAMBODGE

When new type G1 devices arrived at Khong, Laos, the protectorate was mistakenly identified as "CAMBODGE." The erroneous postmarks remained in service for a couple years until replacements could be obtained.



POSTMARK TYPE: G1
PERIOD OF USE: 1926-27



POSTAL MARKINGS
KHONG CAMBODGE 30-11 27
REVERSE
SAIGON-CENTRAL COCHINCHINE 9-12 27

KRAKOR
CAMBODGE

During World War II, the Krakor post office reopened on 13 February 1942. Krakor's type G 1 postmark latest known use is 1950.



POSTMARK TYPE: G1
PERIOD OF USE: 1943-50



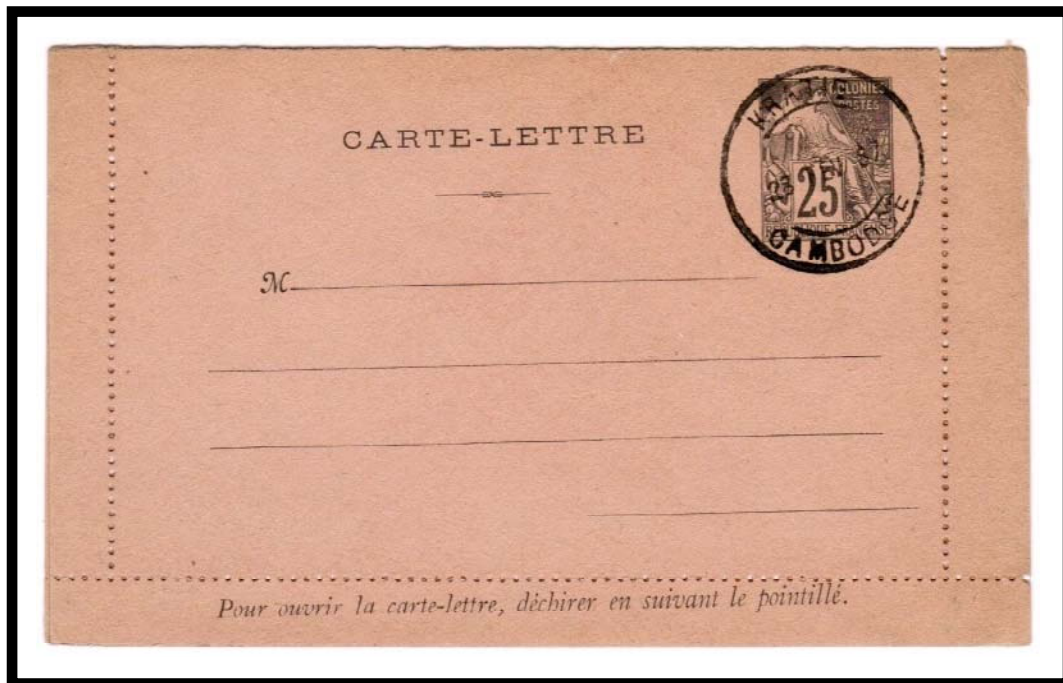
POSTAL MARKINGS
KRAKOR CAMBODGE 11-5 1950
REVERSE
PHNOMPENH CAMBODGE 14-5 1950

KRATIE
CAMBODGE

This style postmark (26.5-millimeter outer diameter), applied as a favor cancel on a Commerce lettercard, had not previously been reported.



POSTMARK TYPE: E1 variety
PERIOD OF USE: 1887



POSTAL MARKINGS
KRATIE CAMBODGE 23 FEVR 87

KRATIE CAMBODGE

The post office opened at Kratie, a provincial capital, in 1884. Its first recorded postmark is a type E2 device, which remained in service for three decades.



POSTMARK TYPE: E2
PERIOD OF USE: 1894-1924



POSTAL MARKINGS

KAMPOT CAMBODGE 15 AOUT 06
PNUMPENH CAMBODGE 19 AOUT 06
KRATIE CAMBODGE 21 AOUT 06

REVERSE

KAMPOT CAMBODGE 15 AOUT 06

KRATIE CAMBODGE

During the French period, Kratie's G1 postmark used "X's" as separators. After independence, the same postmark format was used with dots as separators.



POSTMARK TYPE: G1
PERIOD OF USE: 1928-33



POSTAL MARKINGS

KRATIE CAMBODGE 14-12 32
handstamped routing instruction

REVERSE

PNOMPENH CAMBODGE 15-12 32
MARSEILLE-GARE-AVION B^{CHES} DU RHONE 26 • XIII 1932

KRATIE
CAMBODGE

This cover exhibits the only known examples of Kratie's unusual type G4 postmarks.



POSTMARK TYPE: G4
PERIOD OF USE: 1949



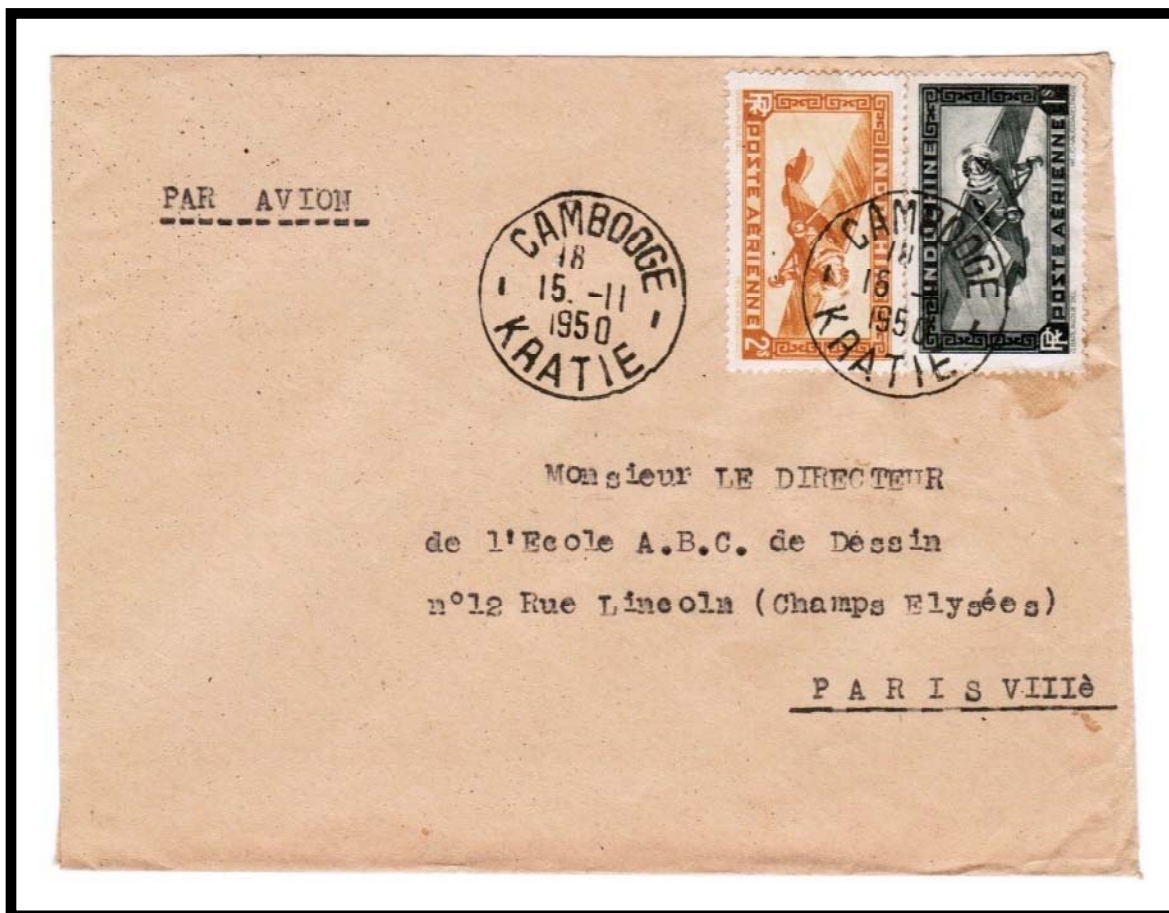
POSTAL MARKINGS
KRATIE CAMBODGE 30-8 1949
REVERSE
PHNOMPENH CAMBODGE 2-9 1949

CAMBODGE
KRATIE

Kratie's type G6 format, with "CAMBODGE" at the top, was unique within Cambodia. It was in service for only two years.



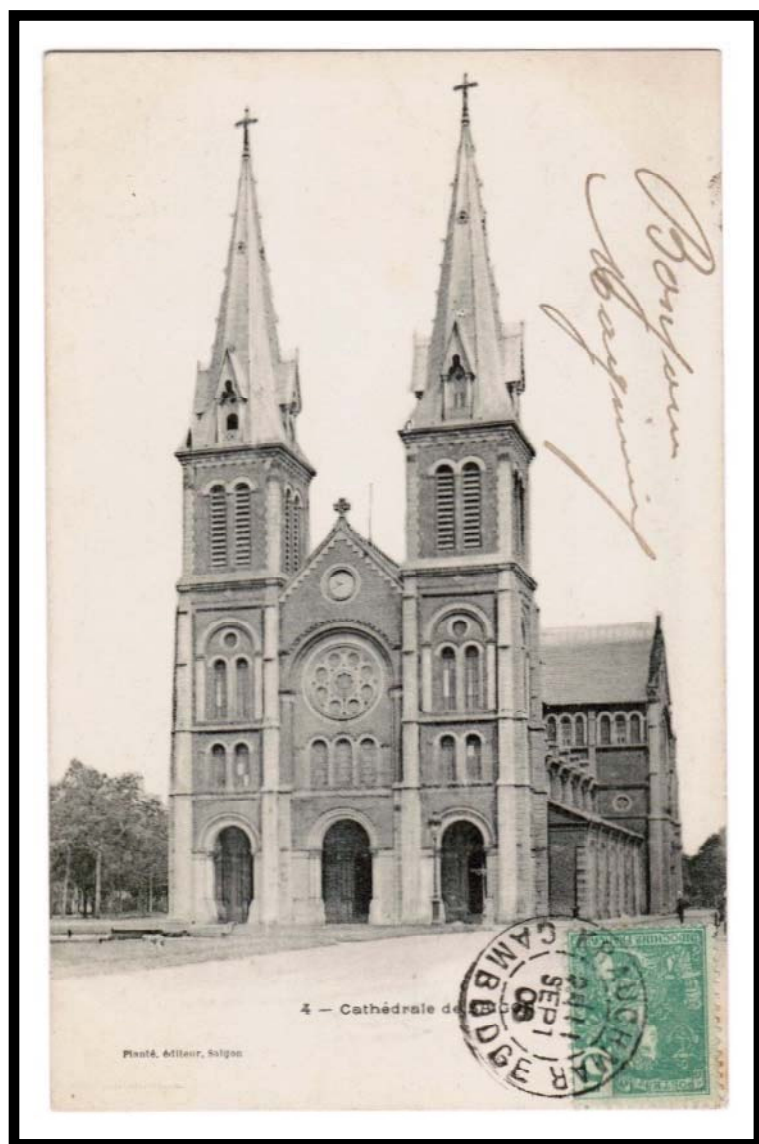
POSTMARK TYPE: G6
PERIOD OF USE: 1950-51



POSTAL MARKINGS
CAMBODGE KRATIE 15-11 1950

KRAUCHMAR CAMBODGE

Krauchmar's first postmark was a type E2 device. It stayed in service for nearly three and a half decades.



POSTMARK TYPE: E2
PERIOD OF USE: 1890-1923

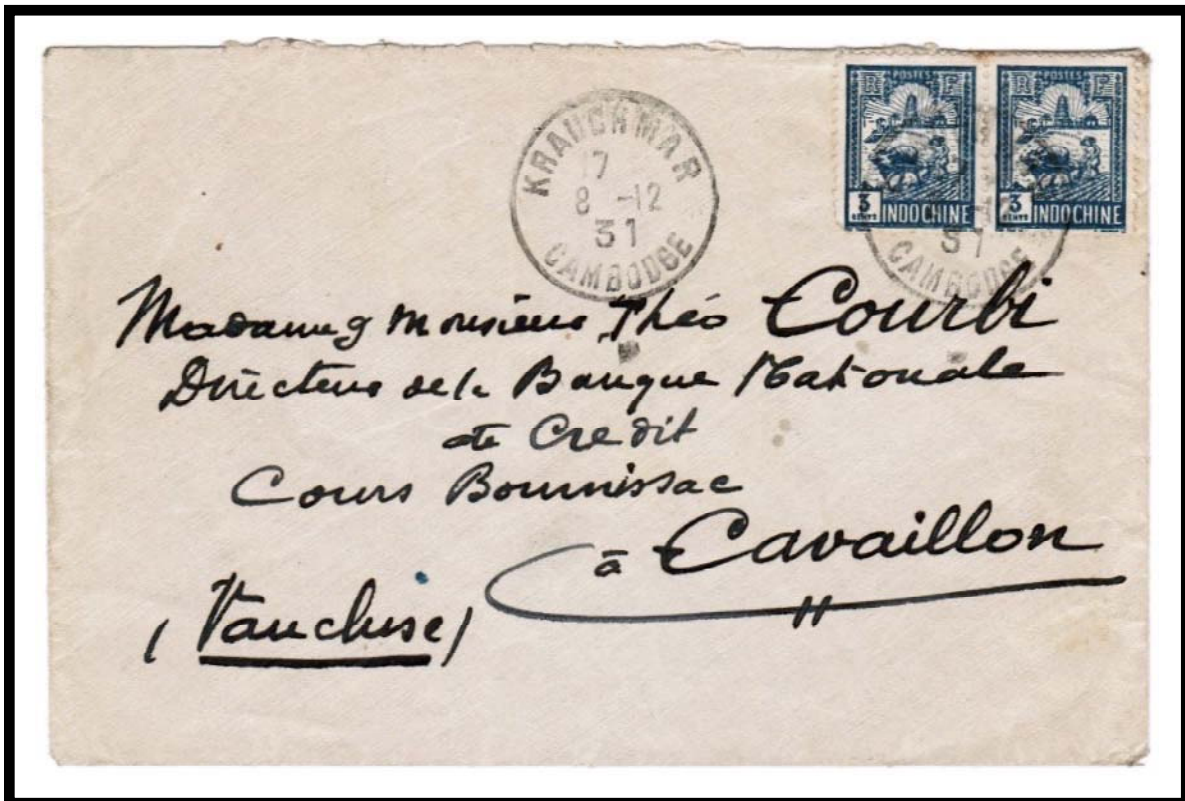
POSTAL MARKINGS
KRAUCHMAR CAMBODGE 11 SEPT 05

KRAUCHMAR CAMBODGE

Krauchmar's type G postmark exists in two distinctly different formats. The first used thick letters with large spaces setting off "CAMBODGE." This cover bears the earliest known example of Krauchmar's first type G postmark.



POSTMARK TYPE: G
PERIOD OF USE: 1931-49



POSTAL MARKINGS
KRAUCHMAR CAMBODGE 8-12 31
REVERSE
PHNOMPENH CAMBODGE 9-12 31

KRAUCHMAR CAMBODGE

With the second type G format, the letters appear almost continuous around the inside of the circle. Krauchmar's type G postmark was in service for a decade and a half. The latest known use of Krauchmar's type G1 postmark is 1949.



POSTMARK TYPE: G
PERIOD OF USE: 1931-49



POSTAL MARKINGS
KRAUCHMAR CAMBODGE 7-3 49
airmail label
REVERSE
PHNOMPENH CAMBODGE 9-3 1949